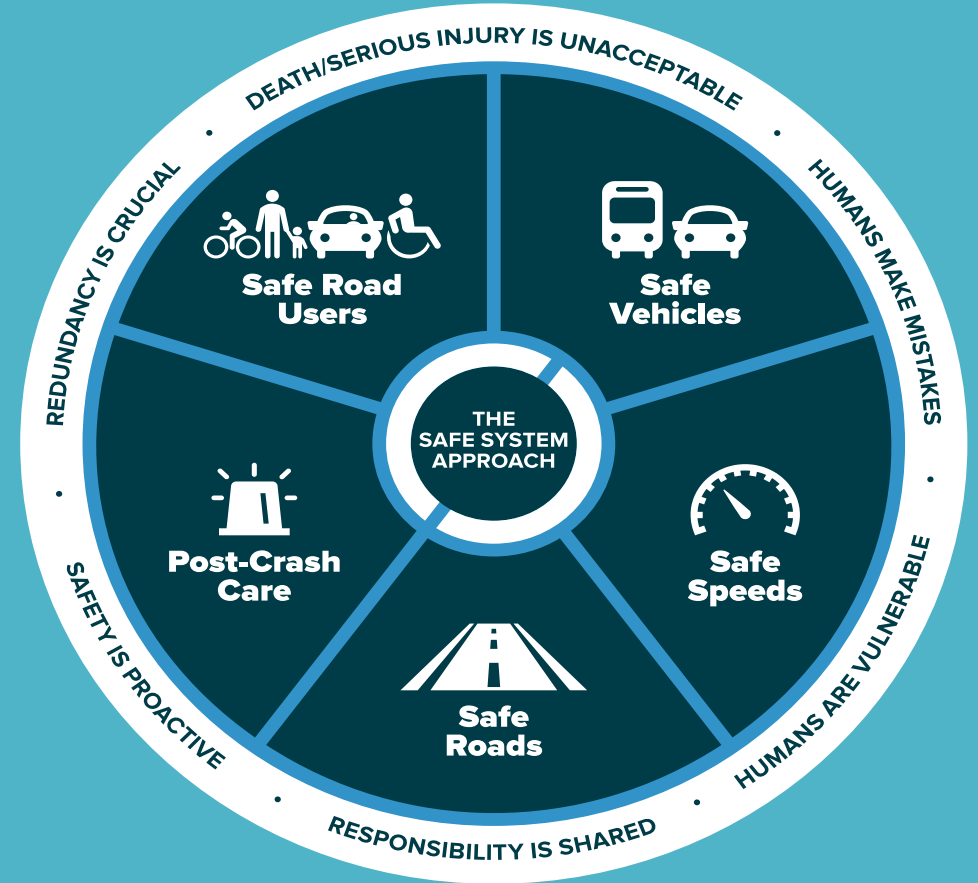


# Highway Safety Performance Measures PM1

Citizens' Advisory Committee January 31, 2024  
Technical Advisory Committee January 31, 2024  
Bicycle Pedestrian Advisory Committee January 31, 2024  
MPO Board February 8, 2024



# Performance Measures Reporting Requirements

- State Departments of Transportation (DOTs) are required by federal law to establish Safety Performance Measures (PM1) targets annually.
- MPOs must adopt targets no later than 180 days after FDOT establishes state targets.
- FDOT established a 2024 statewide target of **zero** for all Safety Performance Measures.
- The Pasco MPO supports the statewide target of **zero** but establishes targets to track the safety performance of the transportation system in Pasco County.
- Safety Performance Measures apply to all public roads.



# Five Safety Performance Measures

2024 PM1 targets are established based on the current five-year rolling average (2018-2022)

Number of  
Fatalities

Number of  
Serious Injuries

Nonmotorized  
Fatalities and  
Serious Injuries

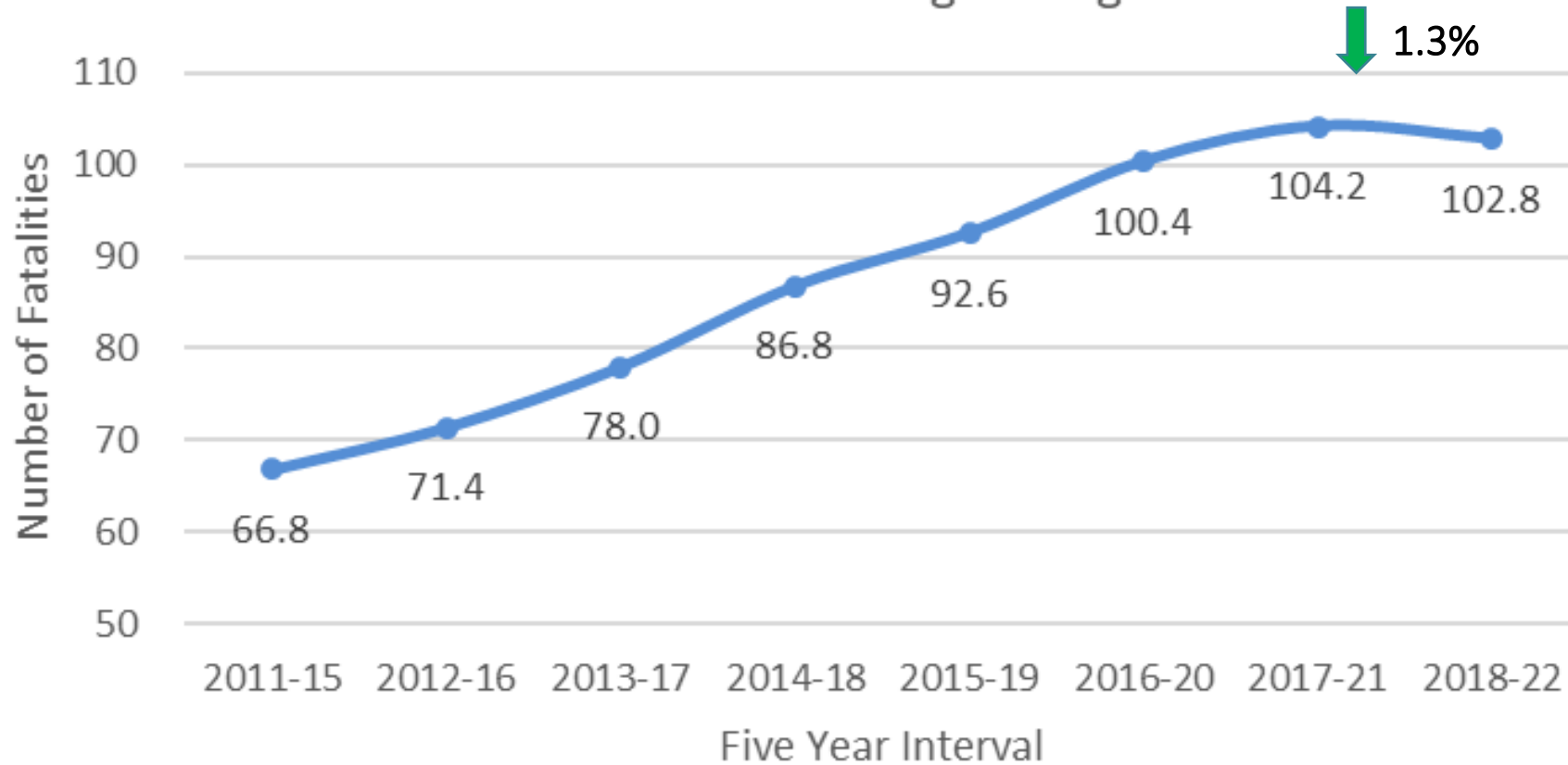
Rate of  
Fatalities

Rate of  
Serious Injuries



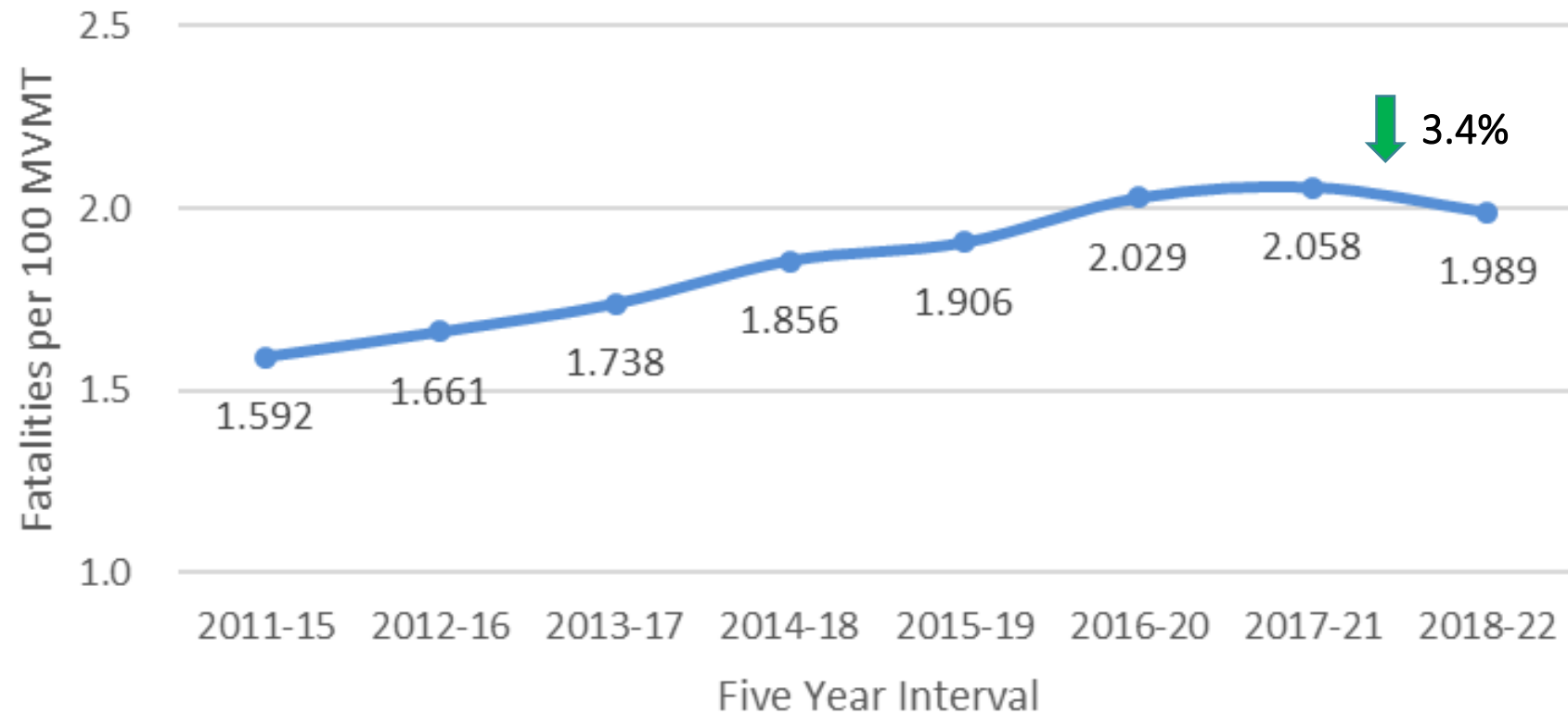
## Pasco County Average Annual Fatalities

Based on 5-Year Rolling Average



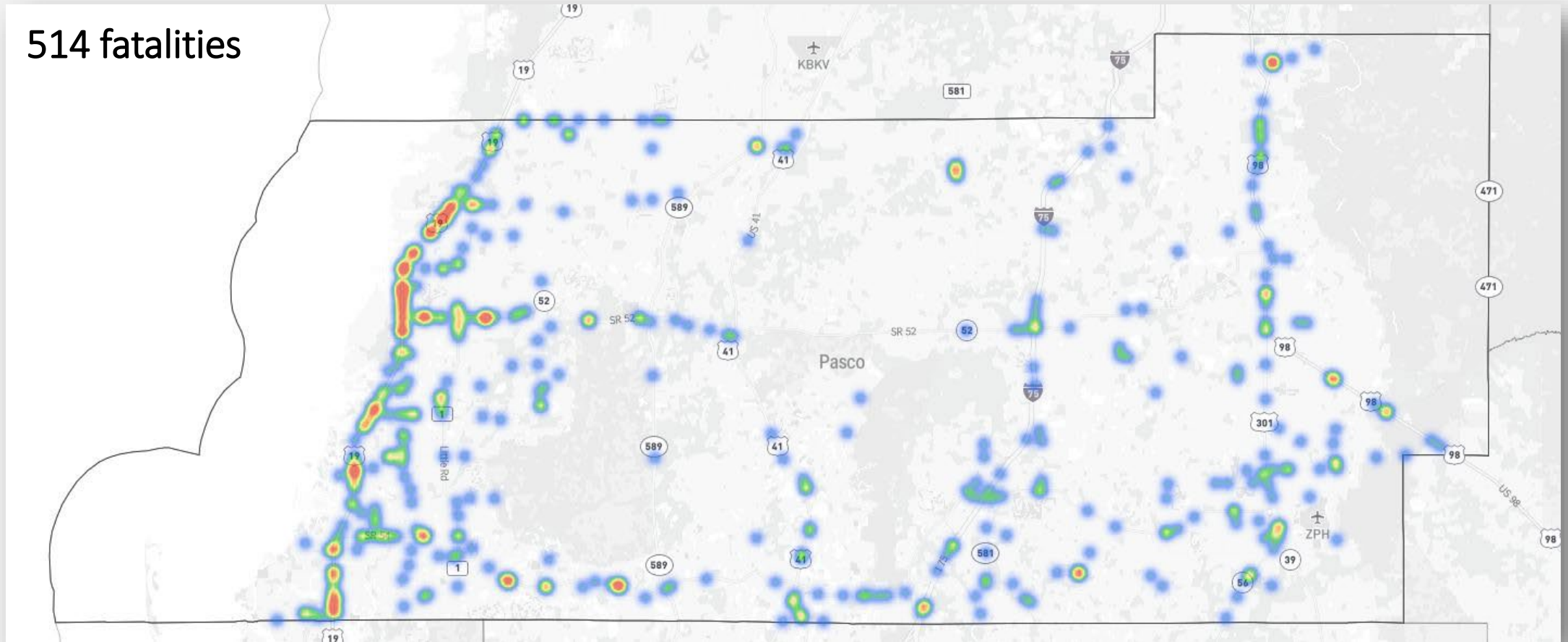
## Pasco County Average Annual Fatality Rate

Based on 5-Year Rolling Average



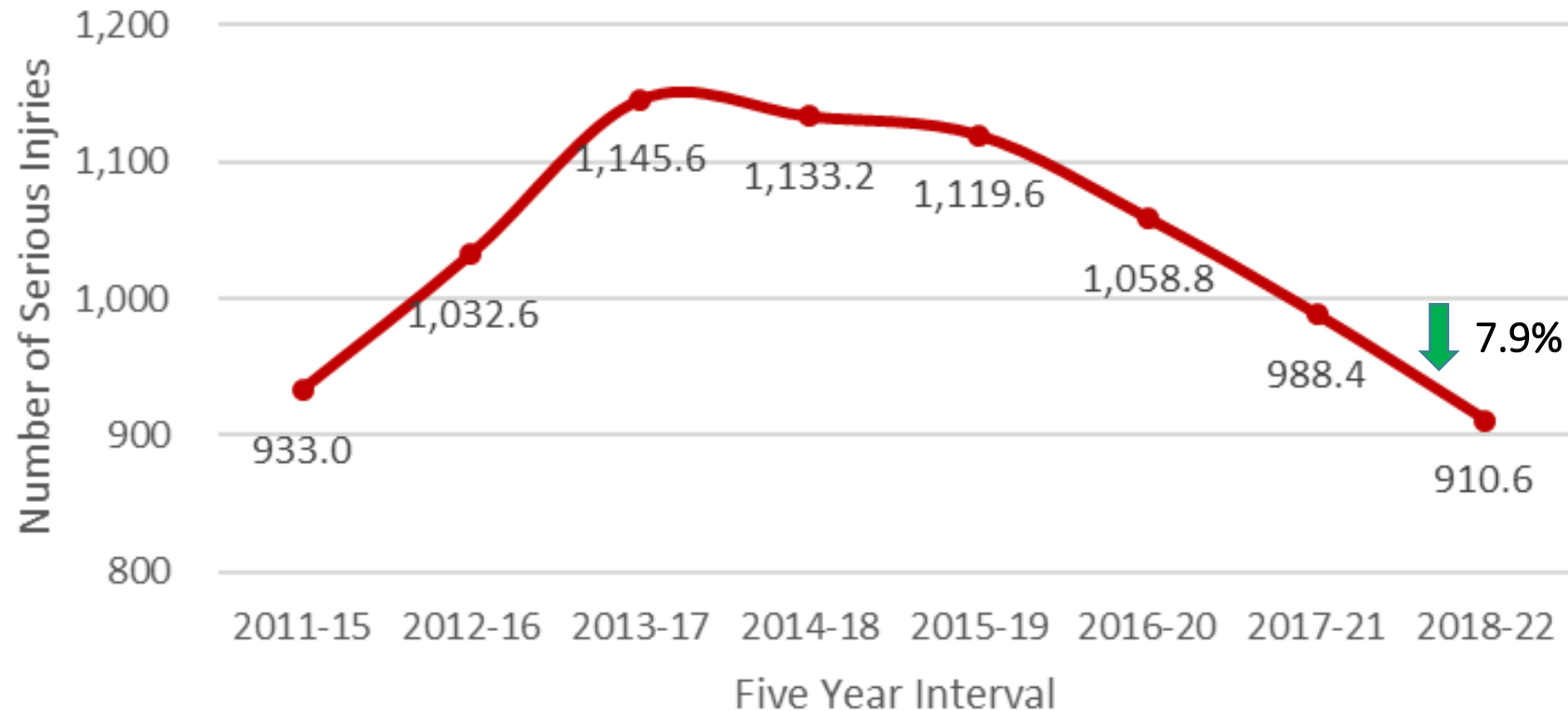
# Fatal Crashes (2018-2022)

514 fatalities



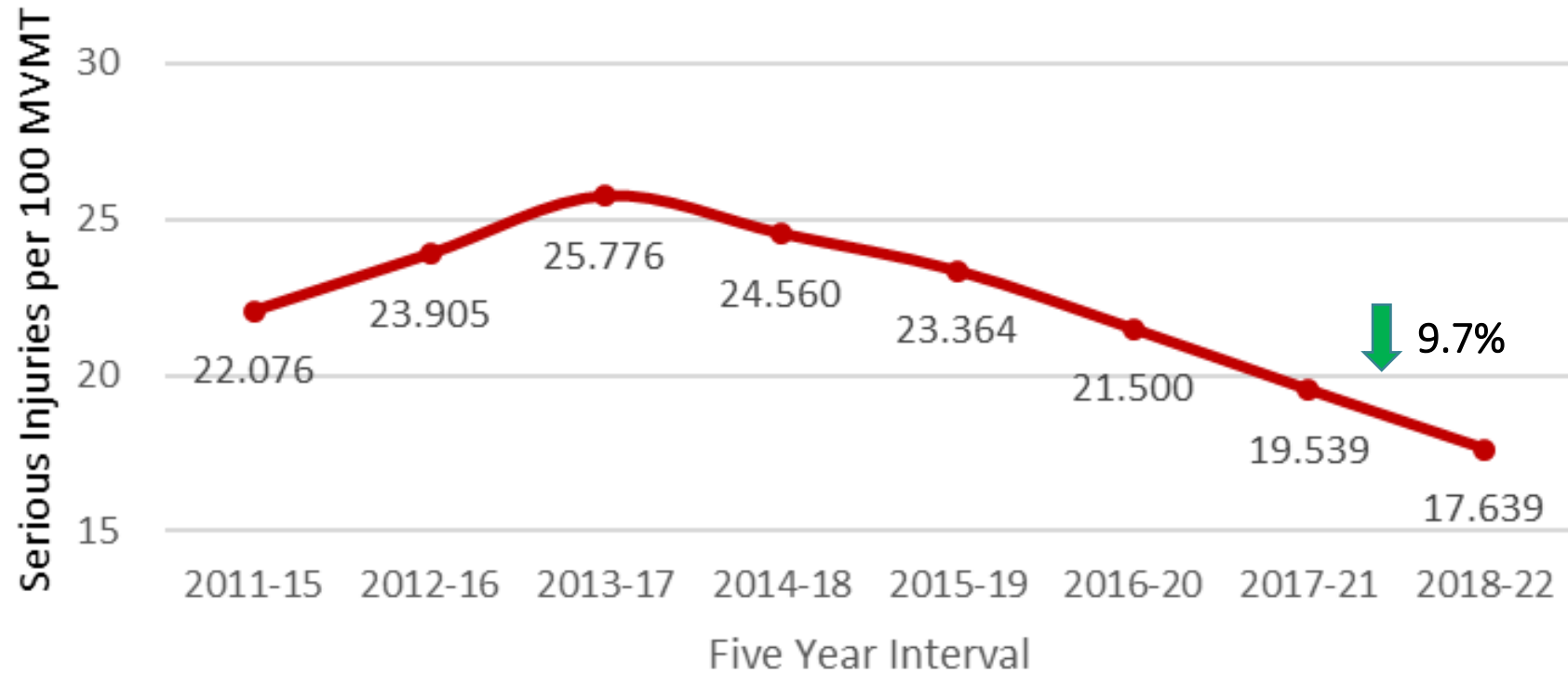
## Pasco County Average Annual Serious Injuries

Based on 5-Year Rolling Average



## Pasco County Average Annual Serious Injury Rate

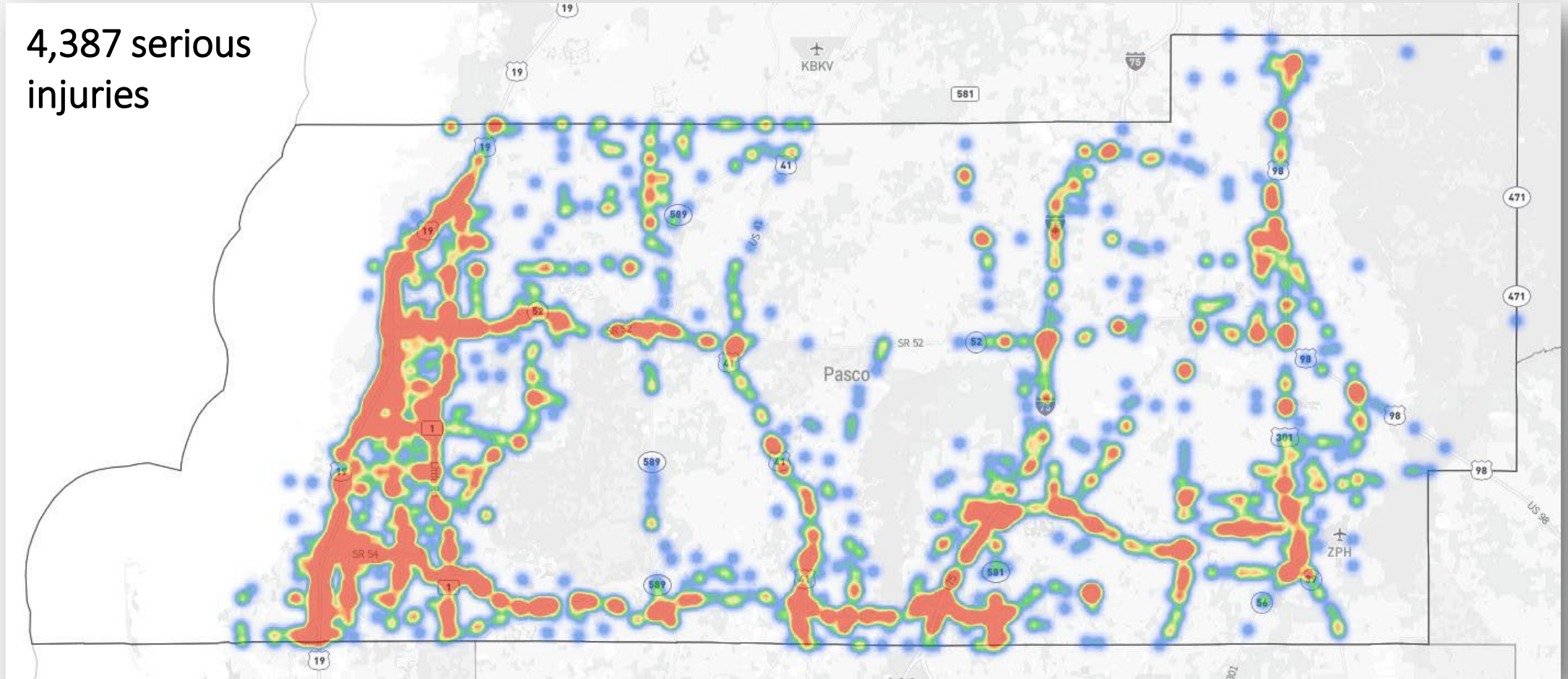
Based on 5-Year Rolling Average





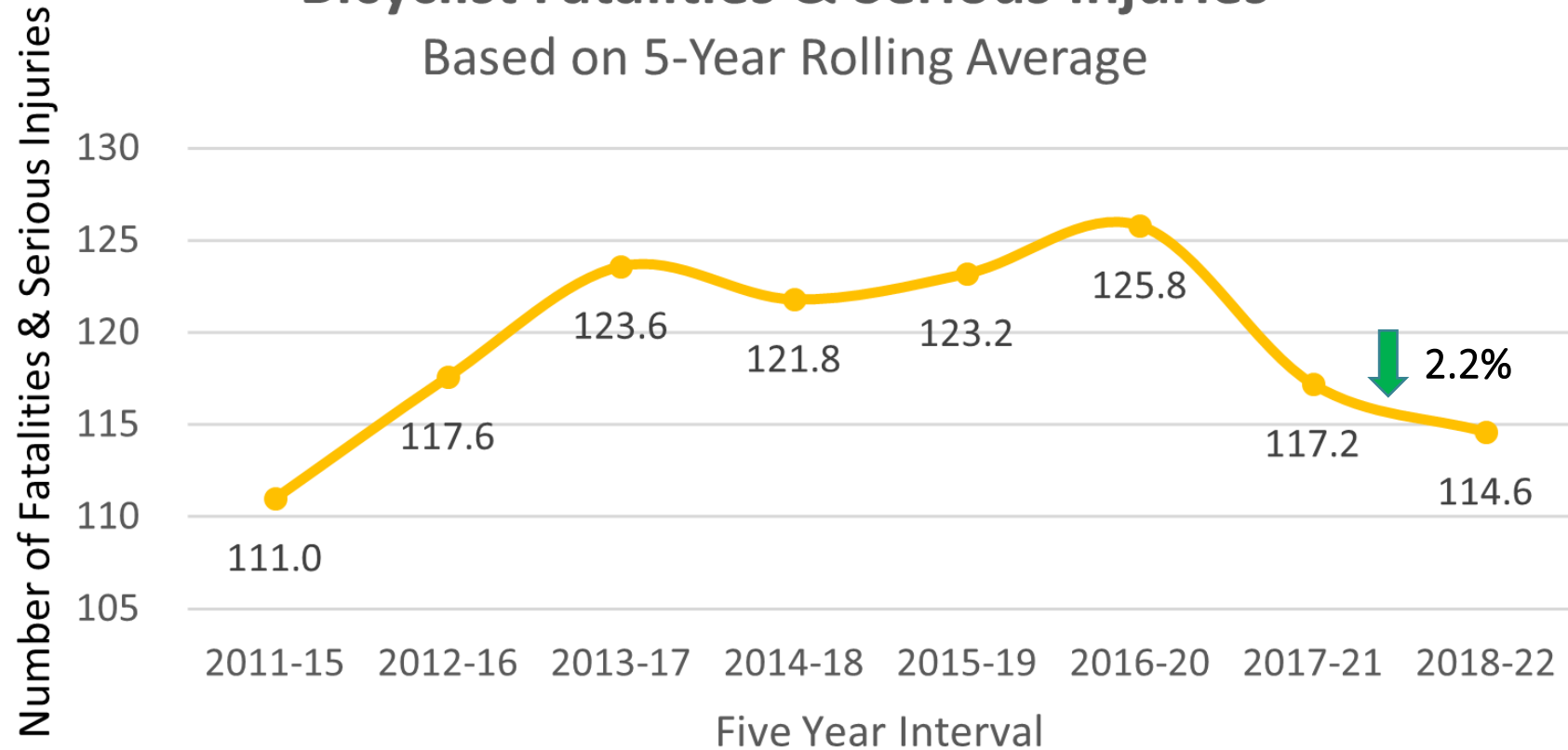
# Serious Injury Crashes (2018-2022)

4,387 serious injuries



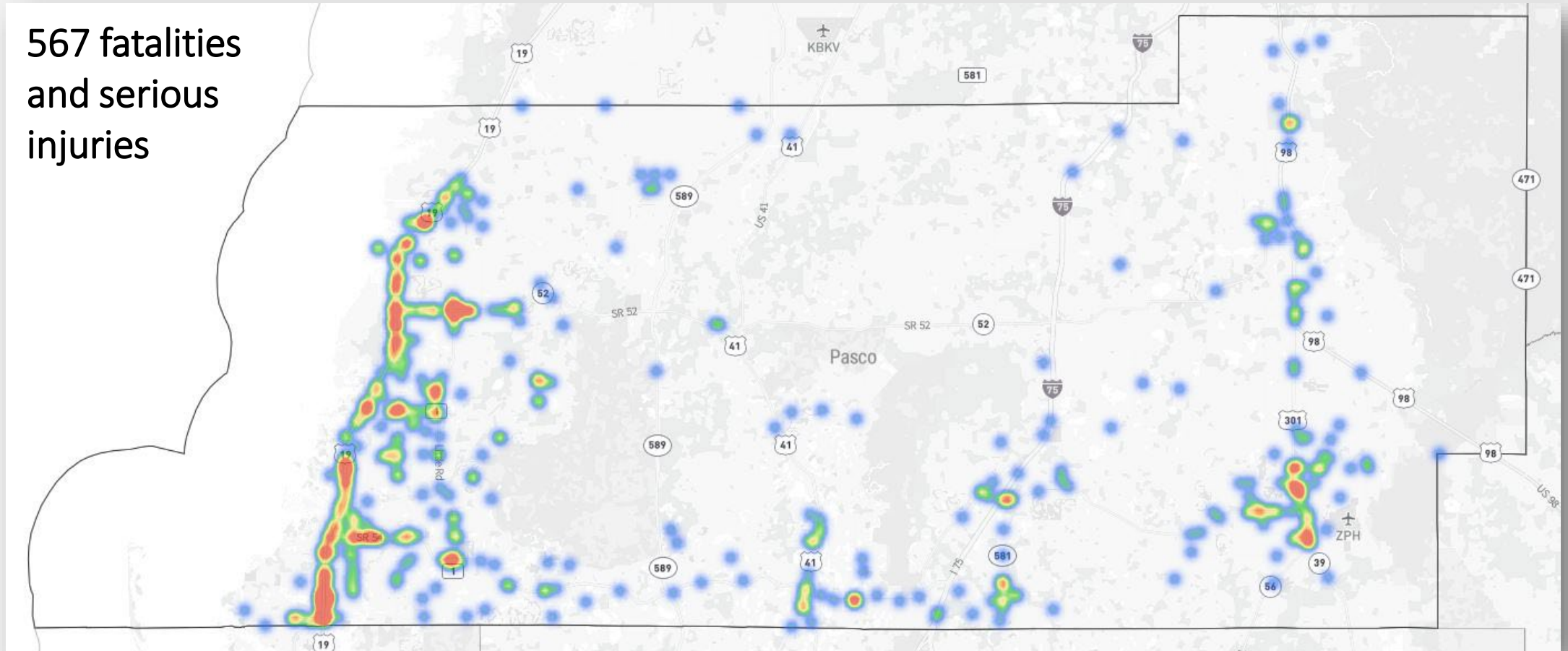
# Pasco County Average Annual Pedestrian and Bicyclist Fatalities & Serious Injuries

Based on 5-Year Rolling Average



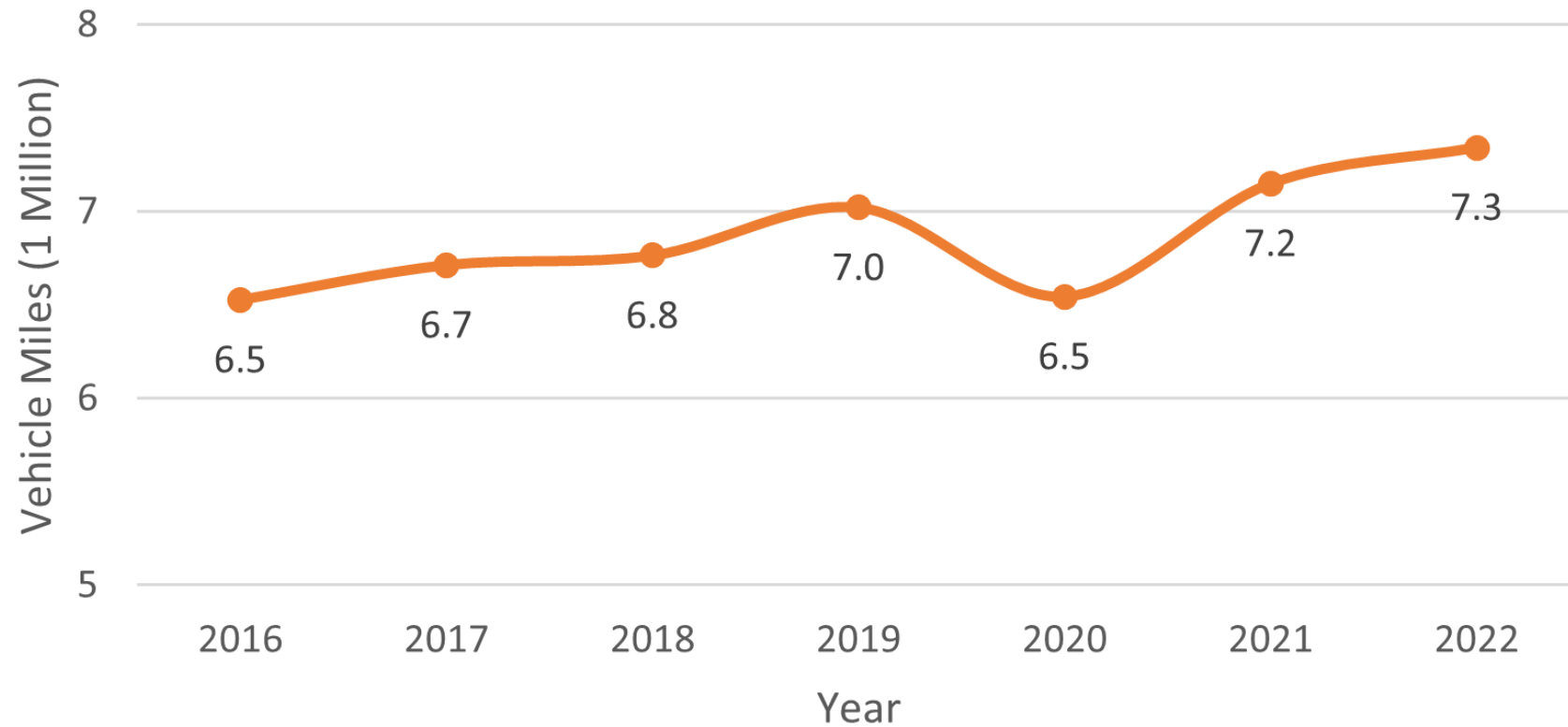
# Nonmotorized Fatal & Serious Injury Crashes (2018-2022)

567 fatalities  
and serious  
injuries



# Pasco County Daily Vehicle Miles Traveled (VMT)

State Highway System



# State of Florida and Pasco County Data

Performance Measure	Florida Statewide 5-yr Average			Pasco MPO 5-yr Average		
	Baseline (2017-2021)	Current (2018-2022)	Difference (%)	Baseline (2017-2021)	Current (2018-2022)	Difference (%)
Number of Fatalities	3,306.4	3,387.2	2.4%	104.2	102.8	-1.3%
Rate of Fatalities per 100 Million Vehicle Miles Traveled	1.52	1.54	1.6%	2.06	1.99	-3.4%
Number of Serious Injuries	18,029.8	17,146.2	-4.9%	988.4	910.6	-7.9%
Rate of Serious Injuries per 100 Million Vehicle Miles Traveled	8.25	7.79	-5.6%	19.5	17.64	-9.7%
Number of Combined Pedestrian and Bicycle Fatalities and Serious Injuries	3,190.4	3,153.8	-1.1%	117.2	114.6	-2.2%

The Pasco County MPO was one of only four MPO planning areas to experience a reduction in all performance measures categories during the current five-year period.





# How is the Pasco MPO Addressing Safety?

- Support the Safe System Approach advocated by the FHWA
- Education and engagement
- Transportation planning on small and large scales
- Continue to improve coordination and communication with planning partners
- Pasco MPO's Project Prioritization methodology
- Safe Streets and Roads for All Comprehensive Safety Action Plan



# Recommended 2024 Pasco County Targets

Performance Measure	Pasco 2023 PM1 Adopted Targets	2018-2022 Five Year Rolling Average	2023 Adopted Target Met?	2024 Recommended Targets for Adoption
Number of Fatalities	93.8	102.8	No	92.52
Rate of Fatalities per 100 Million Vehicle Miles Traveled	1.9	1.9	Yes	1.79
Number of Serious Injury	889.6	910.6	No	819.54
Rate of Serious Injuries per 100 Million Vehicle Miles Traveled	17.6	17.6	Yes	15.88
Number of Combined Pedestrian and Bicycle Fatalities and Serious Injuries	105.5	114.6	No	103.14

Recommended 2024 Targets are Based on a 10% Reduction of the Current Five-Year Rolling Average

