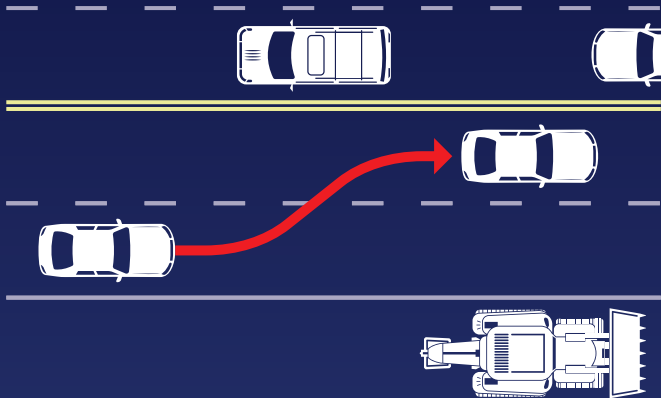


JANUARY IS MOVE OVER MONTH

MULTI-LANE ROAD: MOVE OVER

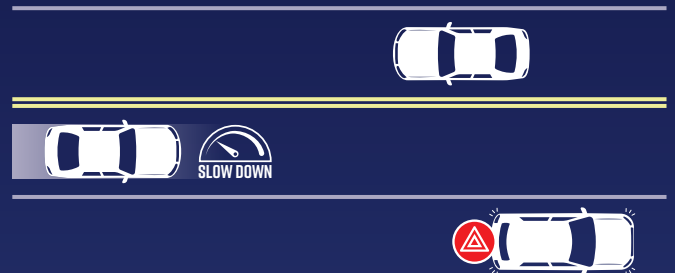


When safe, change lanes away from roadside vehicles with flashing lights or hazard lights on.



JANUARY IS MOVE OVER MONTH

TWO-LANE ROAD: SLOW DOWN

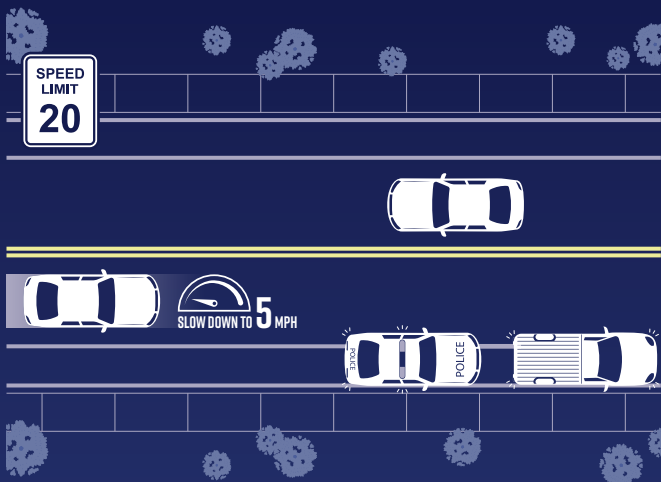


If you can't move over safely, reduce your speed to **20 mph** below the posted speed limit.



JANUARY IS MOVE OVER MONTH

LOW-SPEED ROADS: SLOW TO 5 MPH



On roads with speeds of **20 mph** or less, slow to 5 mph and proceed with caution.



JANUARY IS MOVE OVER MONTH

FLORIDA'S MOVE OVER LAW PROTECTS:

LAW ENFORCEMENT
EMERGENCY RESPONDERS
FDOT ROAD RANGERS
UTILITY AND MAINTENANCE CREWS
SANITATION TECHNICIANS
TOW OPERATORS
DRIVERS OF DISABLED VEHICLES

When approaching a stopped vehicle with flashing lights or hazards:

**MOVE OVER WHEN POSSIBLE.
SLOW DOWN WHEN YOU CAN'T.**





MOVE OVER, FLORIDA!

JANUARY IS MOVE OVER MONTH.
**MOVE OVER AND SLOW DOWN TO
PROTECT LIVES ON THE ROADSIDE.**

Learn more about
Florida's Move Over Law



MOVE OVER, FLORIDA!

JANUARY IS MOVE OVER MONTH.
**MOVE OVER AND SLOW DOWN TO
PROTECT LIVES ON THE ROADSIDE.**

Learn more about
Florida's Move Over Law



MOVE OVER, FLORIDA!

JANUARY IS MOVE OVER MONTH.
**MOVE OVER AND SLOW DOWN TO
PROTECT LIVES ON THE ROADSIDE.**

Learn more about
Florida's Move Over Law



MOVE OVER, FLORIDA!

JANUARY IS MOVE OVER MONTH.
**MOVE OVER AND SLOW DOWN TO
PROTECT LIVES ON THE ROADSIDE.**

Learn more about
Florida's Move Over Law

